

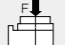

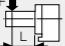
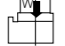
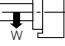
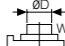
NCT

CNC Rotary Table with Universal Housing

NCT tables are designed with axial - radial bearings to provide excellent load and thrust capabilities. The hydraulic clamp produces a massive holding power and the housings withstand any twisting or flexing. The large center bore series provides for added flexibility when adding work holding devices.

● Suitable for Vertical and Horizontal mounting



| Model | | NCT-125R(L) | NCT-170R(L) | NCT-200R(L) | NCT-250R(L) | NCT-320RV(LV) NCT-B-320RV(LV) | |
|---|--|-------------------|-------------------|-------------------|-------------------|---------------------------------------|-------|
| Table diameter | (mm) | Ø125 | Ø170 | Ø200 | Ø250 | Ø320 | |
| Diameter of "Pilot" bore | (mm) | Ø40 ^{H7} | Ø50 ^{H7} | Ø60 ^{H7} | Ø50 ^{H7} | Ø60 ^{H7} /Ø110 ^{H7} | |
| Diameter of through hole | (mm) | Ø25 | Ø30 | Ø40 | Ø40 | Ø46/Ø100 | |
| Overall height with table top horizontal | (mm) | 150 | 190 | 195 | 200 | 230 | |
| Center height with table top vertical | (mm) | 110 | 135 | 135 | 170 | 210 | |
| Width of T slots | (mm) | 12 ^{H7} | 12 ^{H7} | 12 ^{H7} | 12 ^{H7} | 14 ^{H7} | |
| Width of alignment key in mounting base | (mm) | 14 ^{H7} | 14 ^{H7} | 18 ^{H7} | 18 ^{H7} | 18 ^{H7} | |
| Clamp operation pressure (Hydraulic) | (bar) | 35 | 35 | 35 | 35 | 35 | |
| Ambient temperature | (°C) | 18°~40° | | | | | |
| Minimum input increment | (degree) | 0.001° | 0.001° | 0.001° | 0.001° | 0.001° | |
| Gear ratio, Motor to Table Top | | 1/90 | 1/90 | 1/90 | 1/120 | 1/120 | |
| Table speed | (motor 3000 r.p.m) | 33.3 | 33.3 | 33.3 | 25 | 25 | |
| | (motor 4000 r.p.m) | 44.4 | 44.4 | 44.4 | 33.3 | 33.3 | |
| Servo motor (Optional) | FANUC | α2i | α4i | α4i | α8i | α12i | |
| | MITSUBISHI | HF-75T | HF-54T | HF-54T | HF-104S | HF-204S | |
| | SIEMENS | 1FK7042 | 1FK7060 | 1FK7060 | 1FK7063 | 1FK7083 | |
| Indexing accuracy | (sec of arc) | 60" | 20" | 20" | 15" | 15" | |
| Repeatability | (sec of arc) | 4" | 4" | 4" | 4" | 4" | |
| Clamping torque | (kgf-m) | 12 | 16 | 23 | 48 | 78 | |
| | (N-m) | 118 | 157 | 225 | 470 | 764 | |
| Permissible load (With table clamped) | F  (kgf) | 600 | 800 | 1000 | 1400 | 1700 | |
| | | (N) | 5880 | 7840 | 9800 | 13720 | 16660 |
| | FxL  (kgf-m) | 15 | 17 | 24 | 50 | 85 | |
| | (N-m) | 147 | 167 | 235 | 490 | 833 | |
| FxL  (kgf-m) | 20 | 40 | 65 | 85 | 110 | | |
| | (N-m) | 196 | 392 | 637 | 833 | 1078 | |
| Permissible piece part and fixture weight | 0°  (kg) | 100 | 150 | 200 | 250 | 350 | |
| | 90°  (kg) | 50 | 70 | 85 | 100 | 150 | |
| Net Weight | (kg) | 38 | 60 | 75 | 110 | 220 | |
| Allowable work inertia | $J = \frac{W \cdot D^2}{8}$  (kg-m ²) | 0.20 | 0.54 | 1.00 | 1.95 | 4.48 | |

* We reserve the right to make changes arising from constant product development without advance notice.
* The list of fitting servomotor, please refer to page 61.

◎ Standard accessories

| Block nuts | Hangers |
|------------|---------|
| ◎ | ◎ |



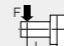
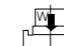
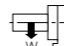
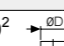
* Optional accessories

| DNS controller | Tailstock | | 3-jaw chuck with sub plate | Encoder | PHC |
|----------------|-----------|---------|----------------------------|---------|---------|
| | Taper | Support | | | |
| *(p.54) | *(p.50) | *(p.52) | *(p.60) | *(p.61) | *(p.60) |

NCT

CNC Rotary Table



| Model | | NCT-400RV NCT-B-400RV | NCT-B-500RV | NCT-B-630RV | NCT-B-800R | NCT-B-1000R | NCT-B-1200R | |
|---|--|---------------------------------------|--------------------|--------------------|--------------------|--------------------|--------------------|-------|
| Table diameter | (mm) | Ø400 | Ø500 | Ø630 | Ø800 | Ø1000 | Ø1200 | |
| Diameter of "Pilot" bore | (mm) | Ø60 ^{H7} /Ø155 ^{H7} | Ø200 ^{H7} | Ø250 ^{H7} | Ø295 ^{H7} | Ø305 ^{H7} | Ø330 ^{H7} | |
| Diameter of through hole | (mm) | Ø51/Ø150 | Ø170 | Ø210 | Ø250 | Ø260 | Ø280 | |
| Overall height with table top horizontal | (mm) | 250 | 300 | 325 | 380 | 430 | 550 | |
| Center of height with table top vertical | (mm) | 250 | 310 | 400 | 480 | 650 | 750 | |
| Width of T slots | (mm) | 14 ^{H7} | 18 ^{H7} | 18 ^{H7} | 22 ^{H7} | 22 ^{H7} | 22 ^{H7} | |
| Width of alignment key in mounting base | (mm) | 18 ^{H7} | 18 ^{H7} | 18 ^{H7} | 22 ^{H7} | 22 ^{H7} | 22 ^{H7} | |
| Clamp operation pressure (Hydraulic) | (bar) | 35 | 35 | 35 | 35 | 35 | 35 | |
| Ambient temperature | (°C) | 18°~40° | | | | | | |
| Minimum input increment | (degree) | 0.001° | 0.001° | 0.001° | 0.001° | 0.001° | 0.001° | |
| Gear ratio, Motor to Table Top | | 1/180 | 1/180 | 1/180 | 1/360 | 1/360 | 1/720 | |
| Table speed | (motor 3000 r.p.m) | 16.6 | 16.6 | 16.6 | 8.3 | 8.3 | 4.16 | |
| | | | | | | | | |
| Servo motor (Optional) | FANUC | α12i | α12i | α22i | α22i | α22i | α30i | |
| | MITSUBISHI | HF-204S | HF-204S | HF-354S | HF-354S | HF-354S | X | |
| | SIEMENS | 1FK7083 | 1FK7083 | 1FK7101 | 1FK7101 | 1FK7101 | 1FK7103 | |
| Indexing accuracy | (sec of arc) | 15" | 15" | 15" | 15" | 15" | 15" | |
| Repeatability | (sec of arc) | 4" | 4" | 4" | 4" | 4" | 4" | |
| Clamping torque | (kgf-m) | 170 | 240 | 420 | 520 | 600 | 800 | |
| | (N-m) | 1666 | 2352 | 4116 | 5096 | 5880 | 7840 | |
| Permissible load (With table clamped) | F  (kgf) | 2000 | 2300 | 2600 | 2800 | 4900 | 6000 | |
| | | (N) | 19600 | 22540 | 25480 | 27440 | 48020 | 58800 |
| | FxL  (kgf-m) | 180 | 250 | 450 | 550 | 650 | 1800 | |
| | (N-m) | 1764 | 2450 | 4410 | 5390 | 6370 | 17640 | |
| FxL  (kgf-m) | 180 | 250 | 400 | 700 | 1800 | 2000 | | |
| | (N-m) | 1764 | 2450 | 3920 | 6860 | 17640 | 19600 | |
| Permissible piece part and fixture weight | 0°  (kg) | 500 | 800 | 1000 | 1400 | 3000 | 5000 | |
| | 90°  (kg) | 200 | 350 | 400 | 600 | 1200 | 2000 | |
| Net Weight | (kg) | 300 | 450 | 820 | 1600 | 2800 | 4000 | |
| Allowable work inertia | $J = \frac{W \cdot D^2}{8}$  (kg-m ²) | 10.00 | 25.00 | 49.61 | 112.00 | 375.00 | 900.00 | |

* We reserve the right to make changes arising from constant product development without advance notice.
* The list of fitting servomotor, please refer to page 61.

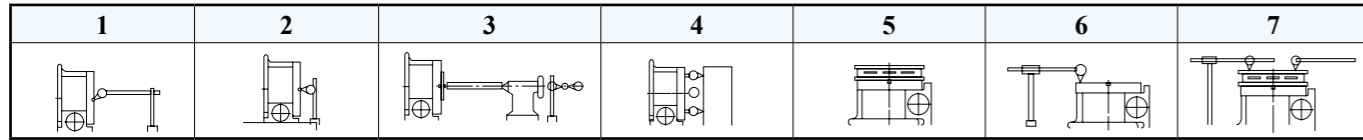
◎ Standard accessories

| Block nuts | Hangers |
|------------|---------|
| ◎ | ◎ |

* Optional accessories

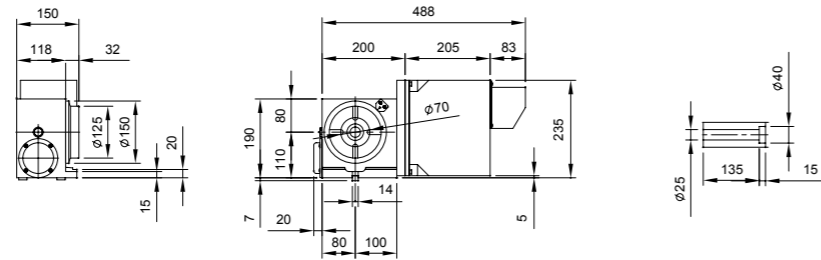
| DNS controller | Tailstock | | 3-jaw chuck with sub plate | Encoder | PHC |
|----------------|-----------|---------|----------------------------|---------|---------|
| | Taper | Support | | | |
| *(p.54) | *(p.50) | *(p.52) | *(p.60) | *(p.61) | *(p.60) |

Guaranteed accuracies

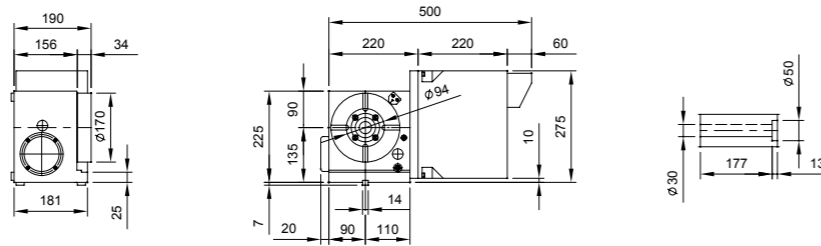


| NO | Inspection items | NCT-125 | | NCT-170 | | NCT-250 | | NCT-B-400 | | NCT-B-630 | | NCT-B-1000 | |
|----|--|------------------------|-------|---------|-----------|-----------|-----------|------------|------|-----------|------|------------|------|
| | | | | NCT-200 | NCT-B-320 | NCT-B-500 | NCT-B-800 | NCT-B-1200 | | | | | |
| 1 | Concentricity of center hole | | 0.01 | 0.01 | 0.01 | 0.01 | 0.01 | 0.01 | 0.01 | 0.01 | 0.01 | 0.01 | 0.01 |
| 2 | Perpendicularity of table with guide block | Per total table length | 0.02 | 0.02 | 0.02 | 0.02 | 0.03 | 0.03 | 0.03 | 0.03 | 0.03 | 0.03 | 0.03 |
| 3 | Height difference of both center lines of Rotary table and tailstock | Per 300 mm length | 0.02 | 0.02 | 0.02 | 0.02 | 0.02 | 0.02 | 0.02 | 0.02 | 0.02 | 0.02 | 0.02 |
| 4 | Perpendicularity of table top to frame bottom | Per total table length | 0.02 | 0.02 | 0.02 | 0.02 | 0.03 | 0.03 | 0.03 | 0.03 | 0.03 | 0.03 | 0.03 |
| 5 | Table top flatness | Per total table length | 0.015 | 0.015 | 0.015 | 0.02 | 0.03 | 0.03 | 0.03 | 0.03 | 0.03 | 0.03 | 0.03 |
| 6 | Parallelism of table top to frame bottom | | 0.01 | 0.01 | 0.01 | 0.015 | 0.02 | 0.02 | 0.02 | 0.02 | 0.02 | 0.02 | 0.02 |
| 7 | Parallelism between table surface and frame bottom face | Per total table length | 0.02 | 0.02 | 0.02 | 0.02 | 0.03 | 0.03 | 0.03 | 0.03 | 0.03 | 0.03 | 0.03 |

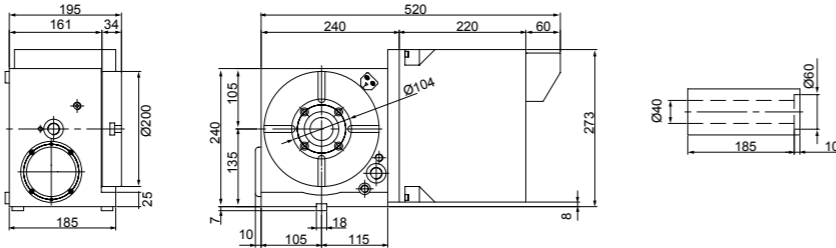
NCT-125R



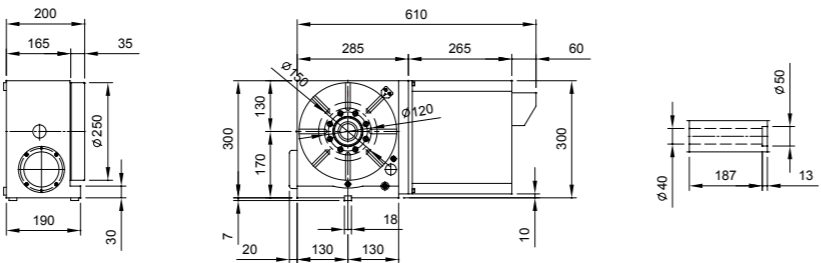
NCT-170R



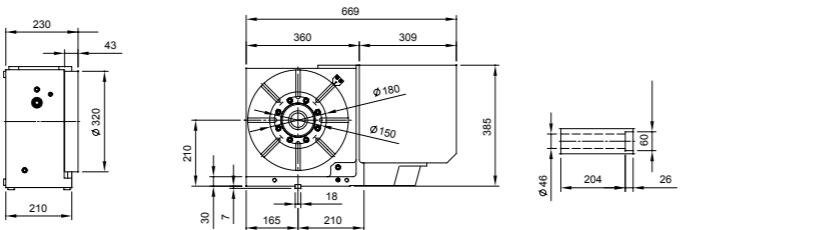
NCT-200R



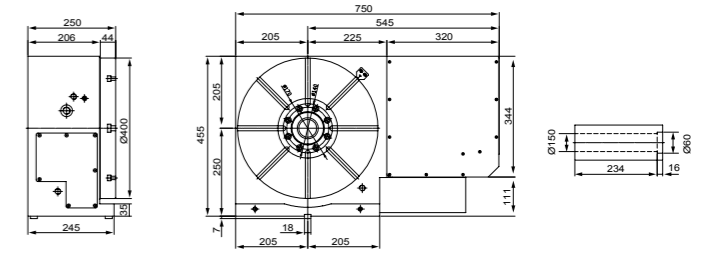
NCT-250R



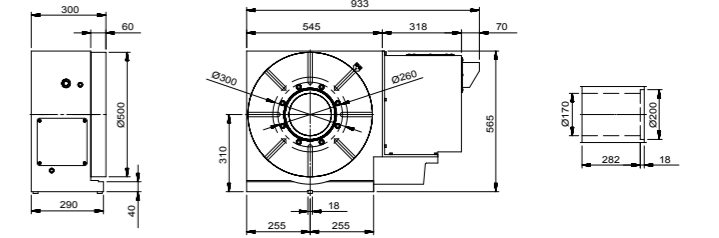
NCT-320RV



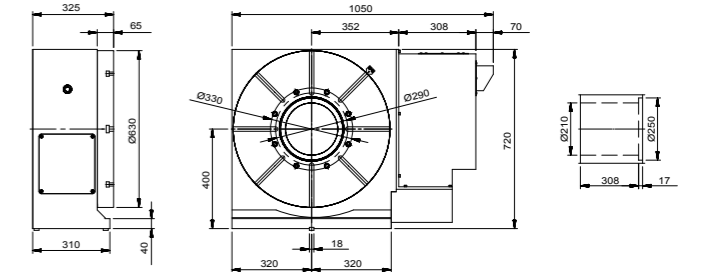
NCT-400RV



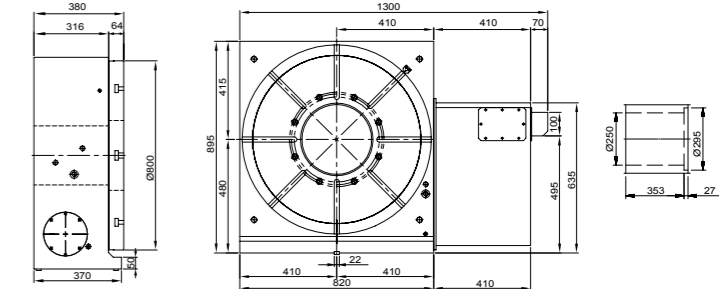
NCT-B-500RV



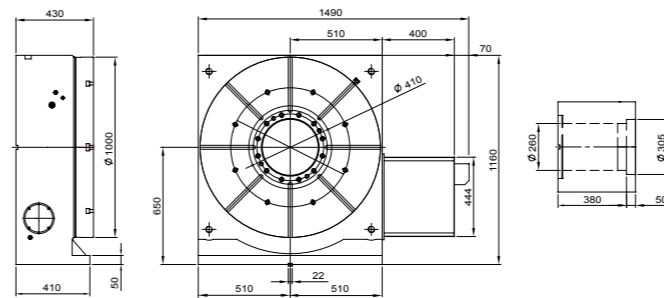
NCT-B-630RV



NCT-B-800R



NCT-B-1000R



NCT-B-1200R

