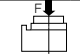

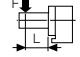

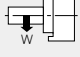
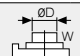


NCT-TN

CNC Multi Spindle Rotary Table

NCT-TN allow multiple piece parts and multi-face machining for greater productivity. The one-piece housing and a single worm shaft ensures optimum rigidity, accuracy and agility.



Model		NCT-125R-T2/T3/T4	NCT-170R-T2/T3	NCT-200R-T2	NCT-250R-T2	
Table diameter	(mm)	Ø125	Ø170	Ø200	Ø250	
Diameter of "Pilot" bore	(mm)	Ø40 ^{H7}	Ø50 ^{H7}	Ø60 ^{H7}	Ø50 ^{H7}	
Diameter of through hole	(mm)	Ø25	Ø30	Ø40	Ø40	
Distance between table centers	(mm)	150	200	250	300	
Overall height with table top horizontal	(mm)	160	190	195	200	
Center height with table top vertical	(mm)	110	135	135	170	
Width of T slots	(mm)	12 ^{H7}	12 ^{H7}	12 ^{H7}	12 ^{H7}	
Width of alignment key in mounting base	(mm)	18 ^{H7}	14 ^{H7}	18 ^{H7}	18 ^{H7}	
Clamp operation pressure (Hydraulic)	(bar)	35	35	35	35	
Ambient temperature	(°C)	18°~40°				
Minimum input increment	(degree)	0.001°	0.001°	0.001°	0.001°	
Gear ratio, Motor to Table Top		1/90	1/90	1/90	1/120	
Table speed	(motor 3000 r.p.m)	33.3	33.3	33.3	25	
	(motor 4000 r.p.m)	44.4	44.4	44.4	33.3	
Servo motor (Optional)	FANUC	α4i/α8i	α8i	α8i	α8i	
	MITSUBISHI	HF-54T/HF-104S	HF-104S	HF-104S	HF-104S	
	SIEMENS	1FK7060/1FK7063	1FK7063	1FK7063	1FK7063	
Indexing accuracy	(sec of arc)	60"	40"	40"	30"	
Repeatability	(sec of arc)	4"	4"	4"	4"	
Clamping torque	(kgf-m)	12	16	23	48	
	(N-m)	118	157	225	470	
Permissible load (With table clamped)	F 	(kgf) (N)	600 5880	800 7840	1000 9800	1400 13720
	FxL 	(kgf-m) (N-m)	15 147	17 167	24 235	50 490
	FxL 	(kgf-m) (N-m)	20 196	40 392	65 637	85 833
Permissible piece part and fixture weight	0° 	(kg)	100	150	200	250
	90° 	(kg)	50	70	85	100
Net Weight	(kg)	70 / 90 / 110	115 / 135	140	195	
Allowable work inertia	$J = \frac{W \cdot D^2}{8}$  (kg-m ²)		0.20	0.54	1.00	1.95

* We reserve the right to make changes arising from constant product development without advance notice.
* The list of fitting servomotor, please refer to page 61.

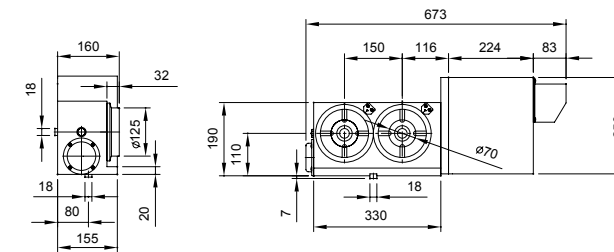
Standard accessories

Block nuts	Hangers
☉	☉

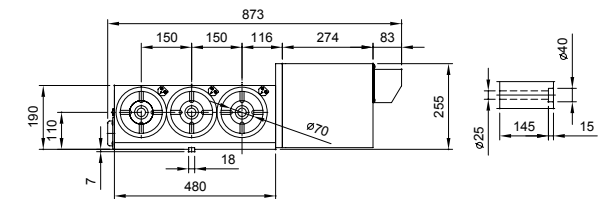
Optional accessories

DNS controller	Tailstock		3-jaw chuck with sub plate	Encoder	PHC x 2
	Taper	Support			
*(p.54)	*(p.50)	*(p.52)	*(p.60)	*(p.61)	*(p.60)

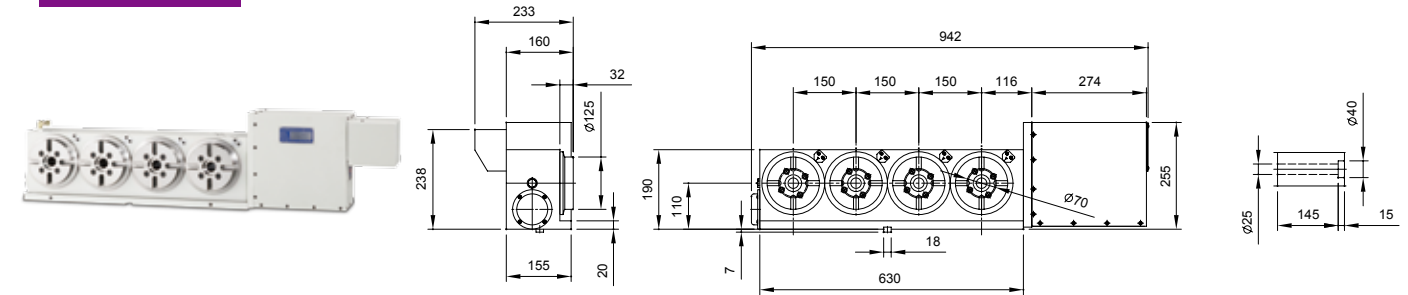
NCT-125R-T2



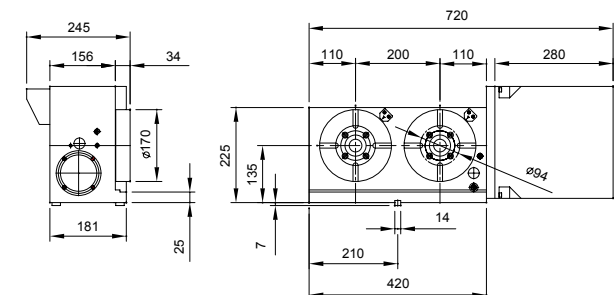
NCT-125R-T3



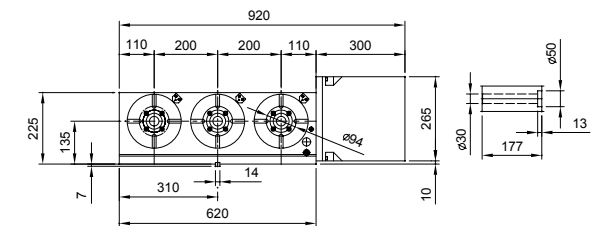
NCT-125R-T4



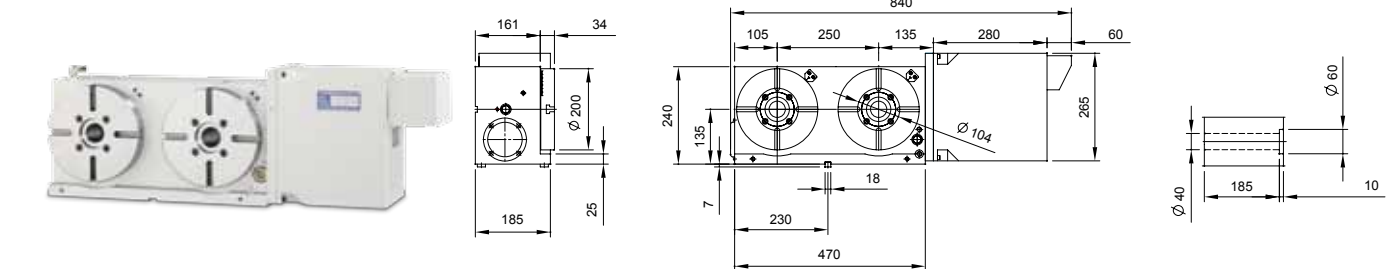
NCT-170R-T2



NCT-170R-T3



NCT-200R-T2



NCT-250R-T2

